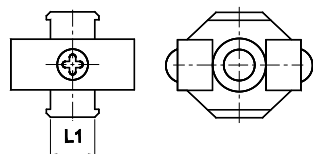


# AIR PREPARATION UNITS - ACCESSORIES

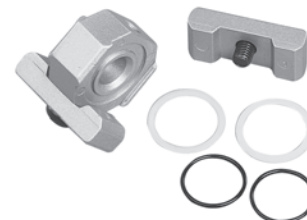
## Accessories - for Modular construction

Cat No APA - 01 - C

### SPACER



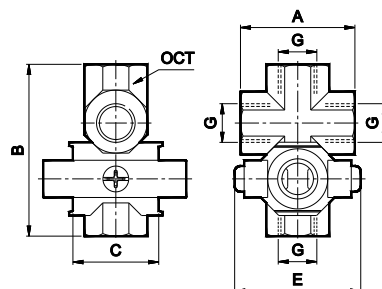
Adoptable to Model series	L1	Ordering No.
F13, L13, R13, FRC13	12	A2S01
F14, L14, R14, FRC14	14	A2S02
F15, L15, R15, FRC15	16	A2S03
F17, R17, L17, FRC17	15	A2S04



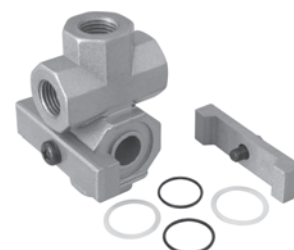
**How to order** :- Mention the ordering number required

**Example** :- Spacer for 3/8 Filter, Regulator, Lubricator series F14, R14, L14 - Ordering no : A2S02

### X SPACER ASSEMBLY - Mountable between FRL, FRC modular units. - 4 way connector



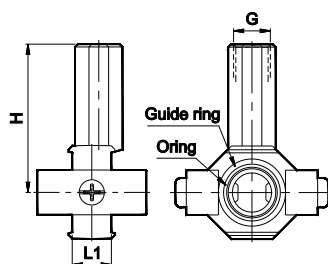
Adoptable to Model series	G	A	B	C	E	OCT	Ordering No.
FRLM13, FRCLM13	1/4	40	60	30	45	22	A2M01
FRLM14, FRCLM14	3/8	45	66.5	35	55	27	A2M02
FRLM15, FRCLM15	1/2	56	83	40	70	30	A2M03



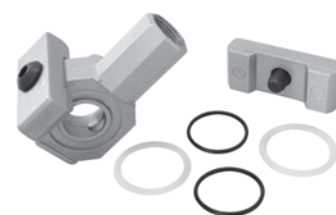
**How to order** :- Mention the ordering number required

**Example** :- X Spacer assembly for 3/8 FRLM, FRCLM Series : Ordering no : A2M02

### T SPACER



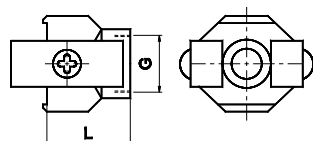
Adoptable to Model series	Size	G	L1	H	Ordering No.
F13, R13, L13, FRC13	1/4	1/8	12	50	A2T01
F14, R14, L14, FRC14	3/8	1/4	14	53	A2T02
F15, R15, L15, FRC15	1/2	3/8	16	52	A2T03



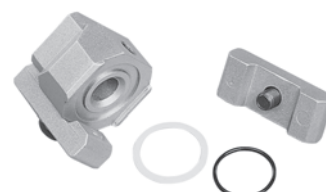
**How to order** :- Mention the ordering number required

**Example** :- T Spacer for 3/8 Filter, Regulator, Lubricator, FRC Series F14, R14, L14, FRC14 : Ordering no : A2T02

### PIPING ADAPTOR



Adoptable to Model series	G	L	Ordering No.
F13, L13, R13, FRC13	1/4	27	A2P01
F14, L14, R14, FRC14	3/8	29	A2P02
F15, L15, R15, FRC15	1/2	32	A2P03
F17, R17, L17, FRC17	G3/4	35	A2P07
	G1	35	A2P08



**How to order** :- Mention the ordering number required

**Example** :- Piping Adaptor for 3/8 Filter, Regulator, Lubricator series F14, R14, L14 - Ordering no : A2P02

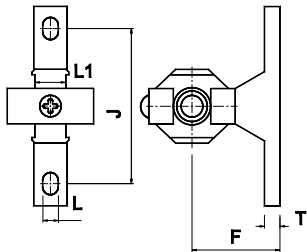
Subject to change

## AIR PREPARATION UNITS - ACCESSORIES

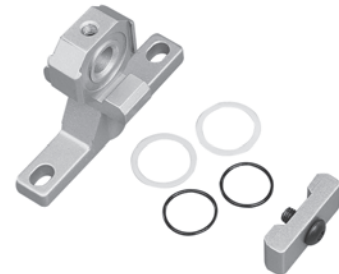
Accessories - for Modular construction

Cat No APA - 01 - C

### WALL MOUNTING BRACKET



Adoptable to Model series	L1	J	L	F	T	Ordering No.
F13, L13, R13, FRC13	12	50	7	35	7	A2W01
F14, L14, R14, FRC14	14	70	7	45	7	A2W02
F15, L15, R15, FRC15	16	90	9	55	9	A2W03
F17, R17, L17, FRC17	15	100	12	70	10	A2W04



**How to order** :- Mention the ordering number required

Example :- Wall mounting Bracket for 3/8 Filter, Regulator, Lubricator series F14, R14, L14 : Ordering no : A2W02

### KIT FOR MODULAR CONSTRUCTION

For Modular construction, order accessories as given below

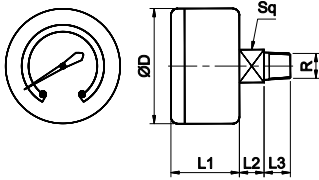
	Wall mounting bracket	Piping Adaptor
FRCLM	1	2
FRLM	2	2

## AIR PREPARATION UNITS - ACCESSORIES

### Accessories - Pressure Gauge

Cat No APA - 01 - C

#### PRESSURE GAUGE



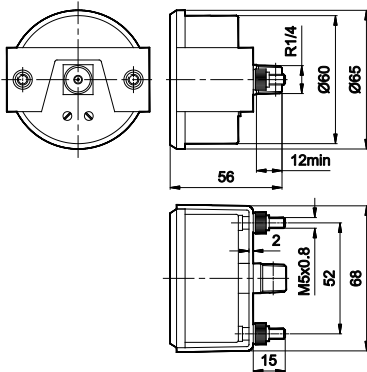
Thread R	Pressure range bar	Adoptable to Model series	ØD	L1	L2	L3	Sq	Ordering No.
R1/8	0 - 4	R13, R14, R15, FRC13, FRC14, FRC15	42	24 <sup>+1</sup>	9 <sup>+2</sup>	8 <sup>+2</sup>	11/12	A2G01
	0 - 10							A2G02
	0 - 16							A2G03
R1/4	0 - 4	R17, FRC17	50	28	9 <sup>+2</sup>	13 <sup>+1</sup>	14	A2G07
	0 - 10							A2G08
	0 - 16							A2G09



**How to order** :- Mention the ordering number required

Example :- Pressure Gauge for Regulator with Pressure range 0 - 10 bar : Ordering no : A2G02

#### PANEL MOUNTING PRESSURE GAUGE



Thread	Pressure range bar	Adoptable to Model series	Ordering No.
R1/4	0 - 10	R17, FRC17	A2GP08



**How to order** :- Mention the ordering number required

Example :- 1/4 Pressure Gauge for Regulator with Pressure range 0 - 10 bar : Ordering no : A2GP08

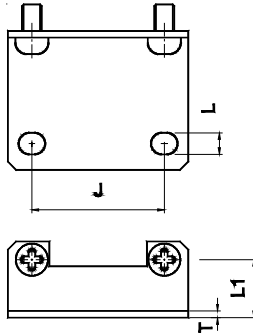
Subject to change

## AIR PREPARATION UNITS - ACCESSORIES

### Accessories - CLAMPS

Cat No APA - 01

#### CLAMP for FILTER, LUBRICATOR



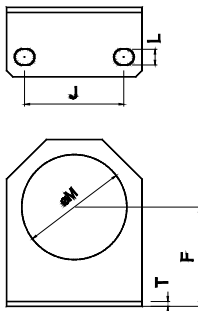
Adoptable to Model series	J	L	L1	T	Ordering No.
F13, L13	28	5.5	14	2	A2C31
F14, L14	40	6.5	17.5	2	A2C32
F15, L15	55	8.5	22	2	A2C33



**How to order** :- Mention the Model number required

**Example** :- Clamp for 3 / 8 Filter , Lubricator Series F14 , L14 : Ordering no: A 2 C 3 2

#### CLAMP for REGULATOR



Adoptable to Model series	ØM	F	L	J	T	Ordering No.
R13, FRC13	30.5	30	5.5	28	2	A2C01
R14, FRC14	42.5	40	6.5	40	2	A2C02
R15, FRC15	52.5	50	8.5	55	2	A2C03

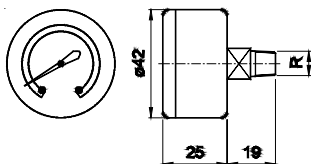


**How to order** :- Mention the Model number required

**Example** :- Clamp for 3 / 8 Regulator Series R14 , FRC 14 : Ordering no: A 2 C 0 2

### Accessories - PRESSURE GAUGE

#### PRESSURE GAUGE



R	Pressure range bar	Adoptable to Model series	Ordering No.
R1/8	0 - 4	R13, R14, R15, FRC13, FRC14, FRC15	A2G01
	0 - 10		A2G02
	0 - 16		A2G03



**How to order** :- Mention the Model number required

**Example** :- Pressure Gauge for Regulator with Pressure range 0 - 10 bar : Ordering no : A 2 G 0 2

# POLYURETHANE TUBE

Series WH

Cat No WH - 01 - 01 - A

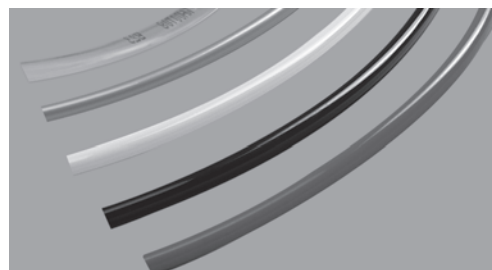
## COLOURED POLYURETHANE TUBES - Ø4, 6, 8, 10, 12mm OD

### Advantages

- Provide differentiation of air line in pneumatic circuits

### Specifications

Medium	Compressed air
Maximum pressure	10 bar
Ambient temperature	5° to 60° C



### Usage instructions

( For maximum efficiency )

- Cut the tube - end burr free and square, using **Tube cutter ( WC1 )** and clean the edge to ensure leak tight joints. (Do not use blunt tools / hacksaw / chisel etc.,)
- Ensure the tube is fully inserted into the fitting - until the positive stop, beyond the 'U' seal.
- Minimum bend radius of the tubing to avoid leakage

Tube OD	Ø4	Ø6	Ø8	Ø10	Ø12
Minimum bend radius (in mm)	10	15	25	30	35

S. No.	Tube size		Tube Colour & Ordering No.				
	Tube OD	Tube ID	Silver	Transparent	Red	Black	Yellow
1	4	2	WH00S04	WH00T04	WH00R04	WH00K04	WH00Y04
2	6	4	WH00S06	WH00T06	WH00R06	WH00K06	WH00Y06
3	8	5	WH00S08	WH00T08	WH00R08	WH00K08	WH00Y08
4	10	7	WH00S10	WH00T10	WH00R10	WH00K10	WH00Y10
5	12	8	WH00S12	WH00T12	WH00R12	WH00K12	WH00Y12

### How to order

Ordering Examble : Ø8 PU tube Transparent colour - WH00T08